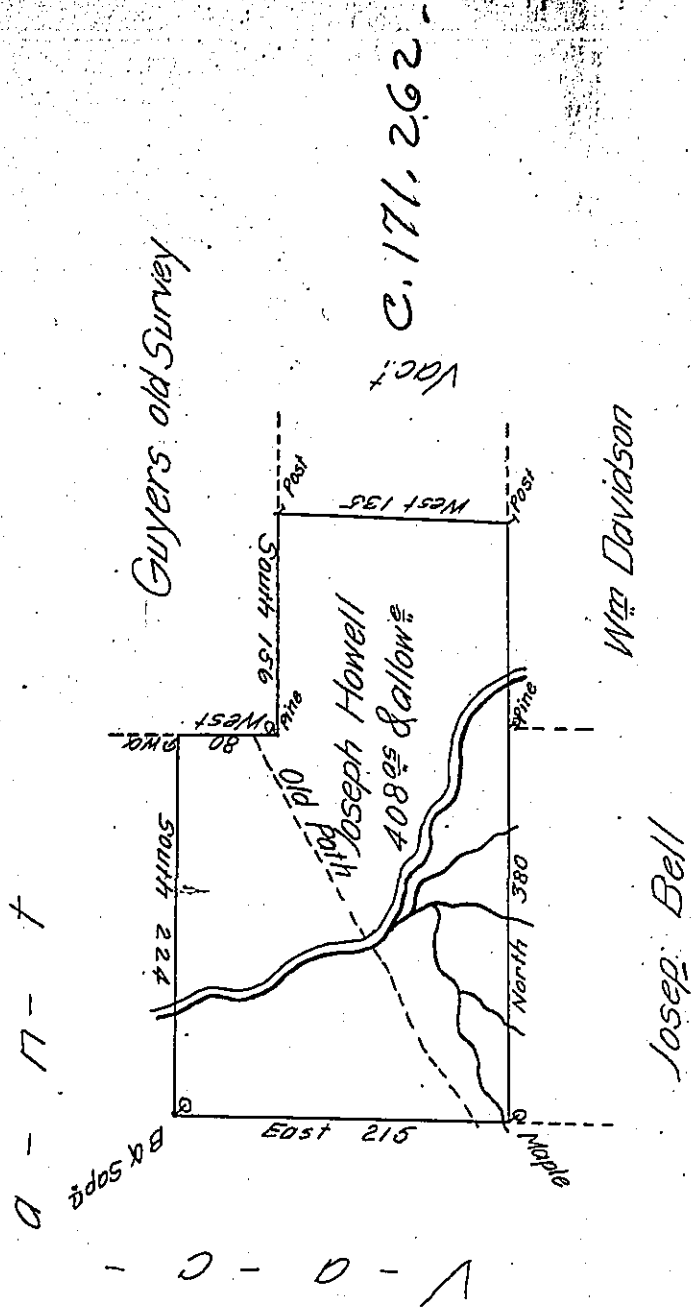


Wright -
Luzerne



Draft of a tract of Land called _____ Situate on a Branch of Wapellepic, Including Part of the old warriors Path Leading from Nanticoke to fort allen in Luzerne County Containing containing four Hundred and Eight acres & allow. of Six P Cent for Roads &c. Surveyed for Joseph Howell the 4th Day of Dec^r 1792 in Pursuance of a warrant dated the 19th Day of July 1792.

*Daniel Brodhead Esq^r } by W^m Gray D.S.
Surv^r Gen^l }*

*135
80
215*

IN TESTIMONY that the above is a copy of the original remaining on file in the Department of Internal Affairs of Pennsylvania, made conformably to an Act of Assembly approved the 16th day of February, 1833, I have hereunto set my Hand and caused the Seal of said Department to be affixed at Harrisburg, this _____ tenth _____ day of April 1905

*Francis R. Johnson
Secretary of Internal Affairs.*